



226,928 SF Steel Service Facility/Warehouse

3475 Spring Grove Avenue, Cincinnati, Ohio 45225 (Hamilton County)

214,500 +/- SF Operational Area
12,428 SF Office | 6.491 Acres

Heavy industrial facility features:

- 2 Docks with levelers
- 9 Drive-in doors
- Bridge cranes: 3-ton, 5-ton (2), 8-ton, 10-ton (4) and 15-ton
- 55-107' Crane span
- 32' 10" Clear to trusses
- 4,000 Amps/480v
- Concrete/steel frame construction

Full access to utilities:

- Gas and electric provided by Duke Energy
- Sewer/water service with substantial capacity provided by Metropolitan Sewer District/Greater Cincinnati Water Works
- Telecommunications and high-speed, fiber-optic Internet provided by Cincinnati Bell

Centrally located with proximity to:

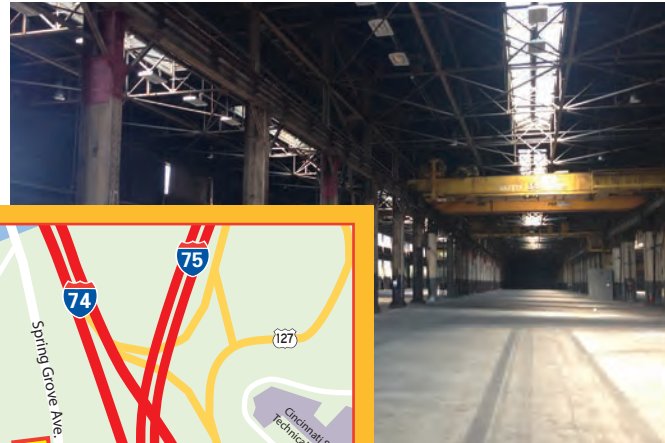
- Downtown, 3.5 miles, 10 minutes
- Access to I-75, less than a mile
- Shipping ports, multiple terminals
- Rail, adjacent to CSX and Norfolk Southern
- Proximity to Cincinnati State, 1.3 miles and University of Cincinnati, 2.3 miles
- Multiple hospitals and medical facilities within 5 miles
- Commercial service airports, 16.1 miles, 25 miles

Large and viable workforce with:

- Strong manufacturing workforce base
- Access to highly skilled workforce

Will co-op with brokers.

Incentives, abatements and tax credits are available for favorable business development, job creation and retention.



Easy access to I-75, I-71 and I-74

For more information about this property, contact:

Matthew Lafkas
MRL Capital Holdings
513-277-0500 | matthew@MRLcapital.com

3475 Spring Grove Avenue Facility

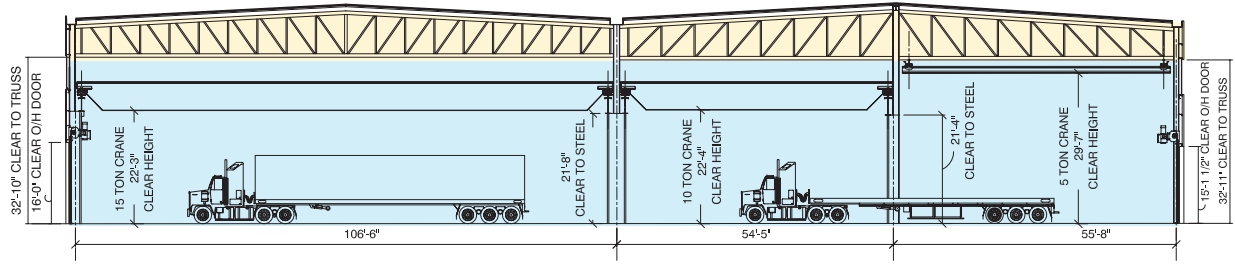
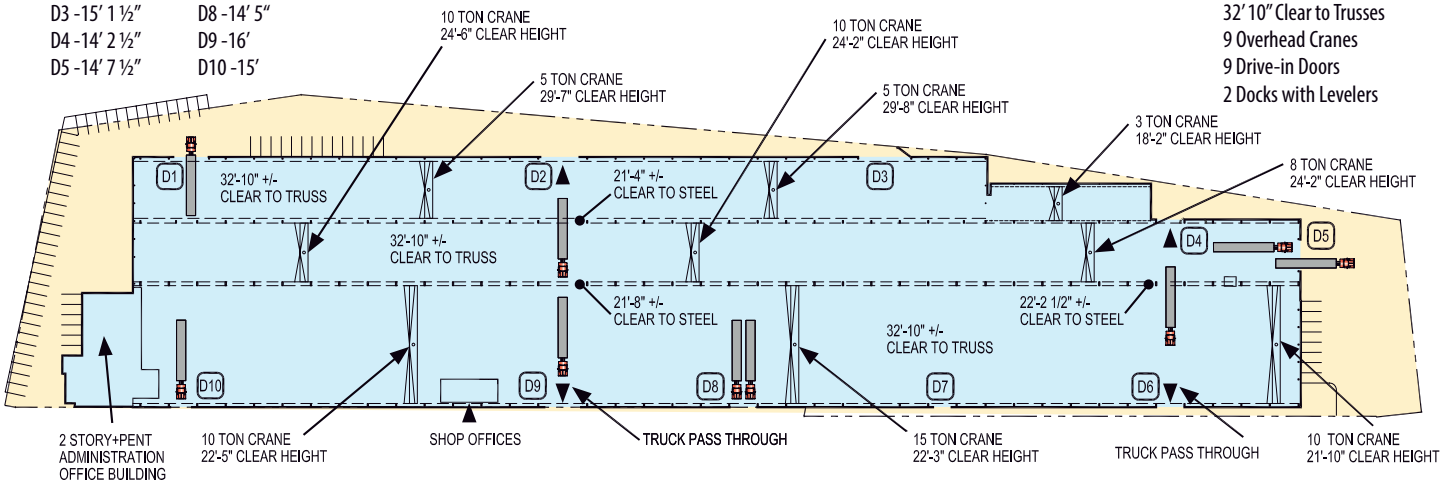
Operational Warehouse Area – 214,500 +/- SF

Overhead Door Clear Heights:

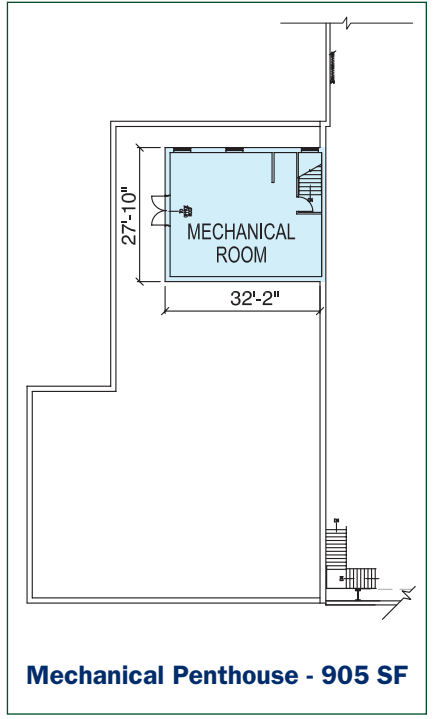
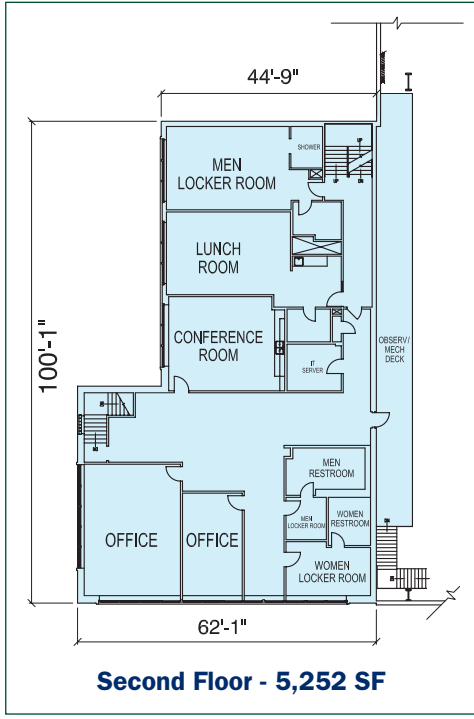
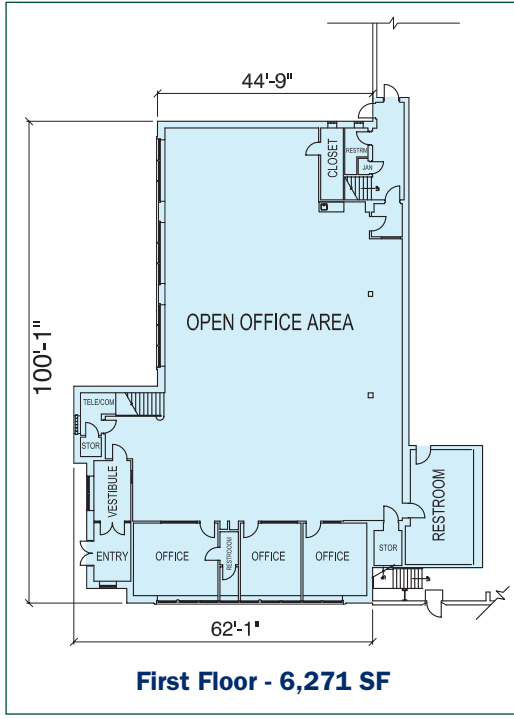
- D1 - 21' 1"
- D2 - 15' 1 1/2"
- D3 - 15' 1 1/2"
- D4 - 14' 2 1/2"
- D5 - 14' 7 1/2"
- D6 - 14'
- D7 - 14' 1 1/2"
- D8 - 14' 5"
- D9 - 16'
- D10 - 15'

Building Specs:

- Length: Up to 1,074'
- Width: Up to 220'
- 32' 10" Clear to Trusses
- 9 Overhead Cranes
- 9 Drive-in Doors
- 2 Docks with Levelers



Offices — 12,428 SF



For more information about this property, contact:
 Matthew Lafkas | MRL Capital Holdings | 513-277-0500 | matthew@MRLcapital.com